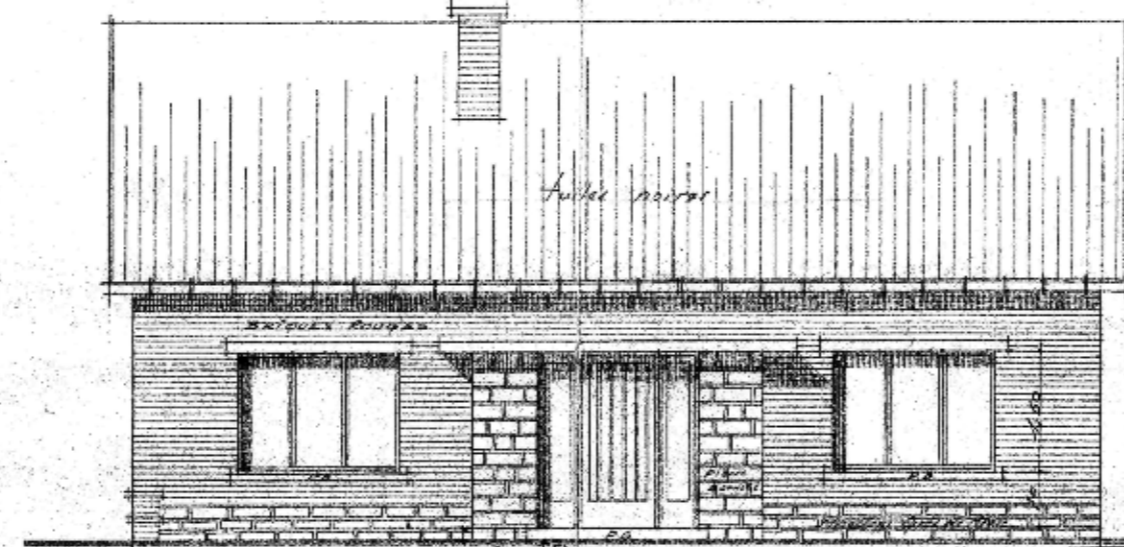
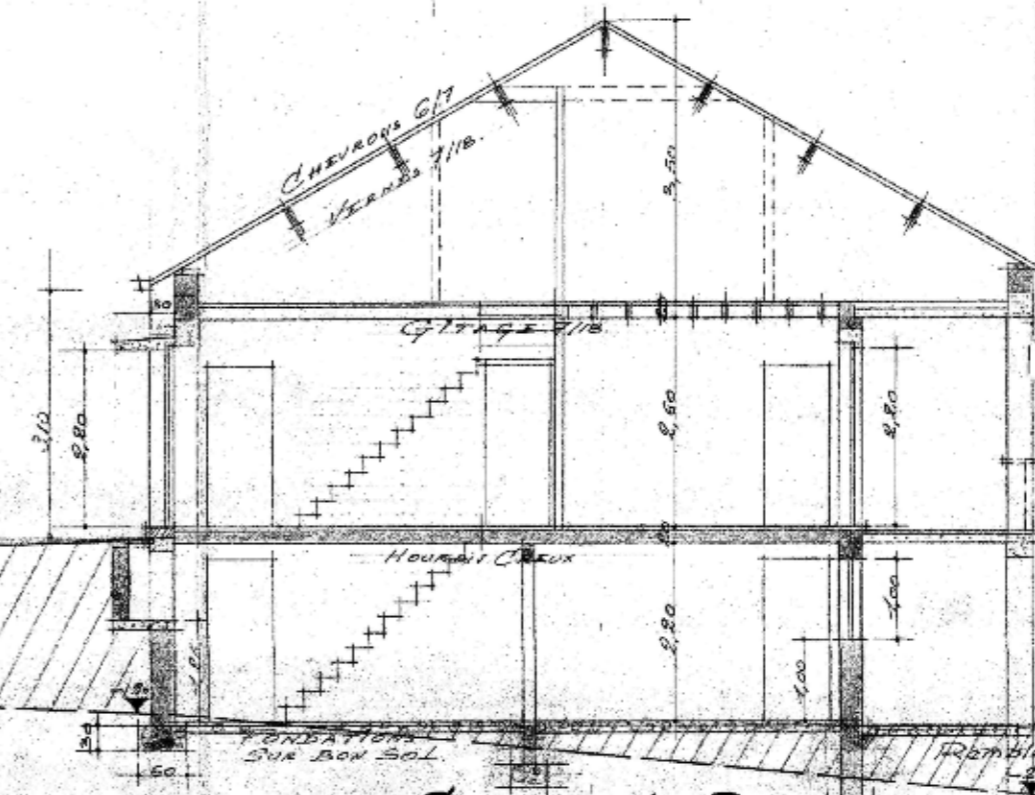


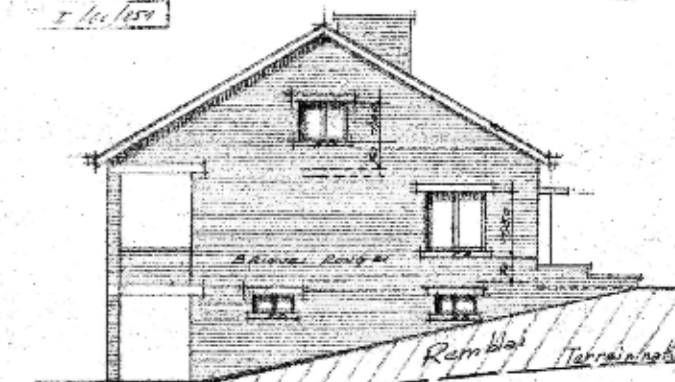
FAÇADE POSTÉRIEURE



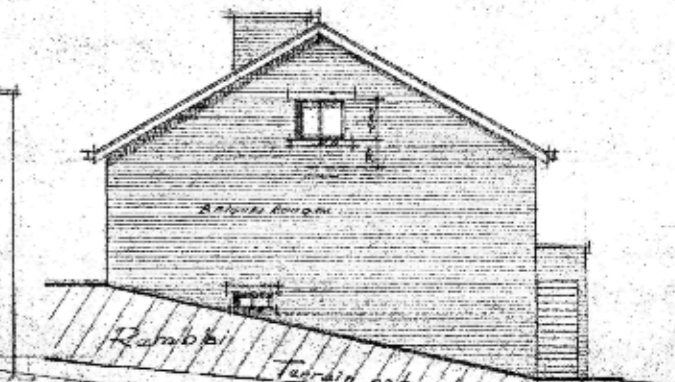
FAÇADE PRINCIPALE



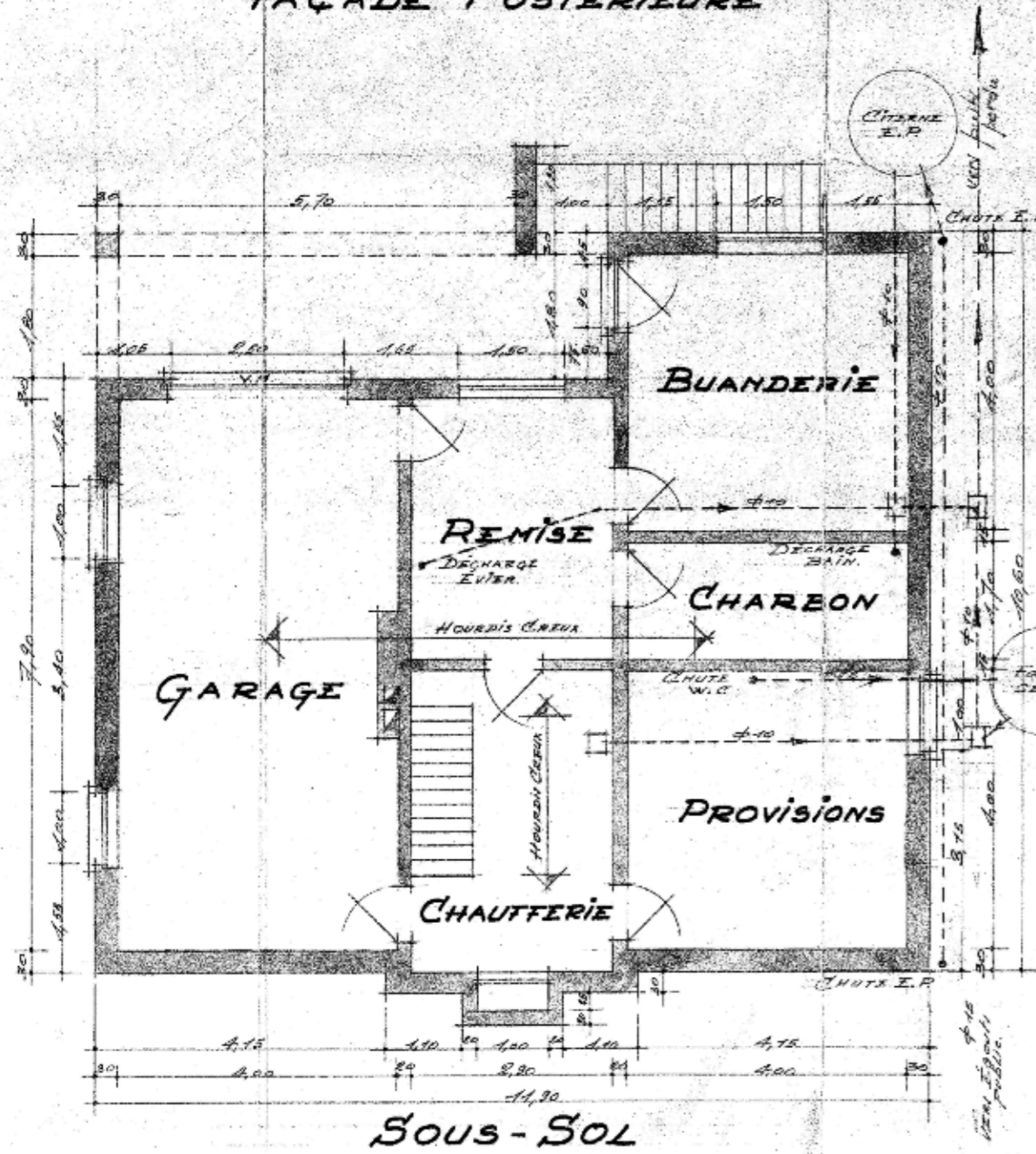
COUPE A-B



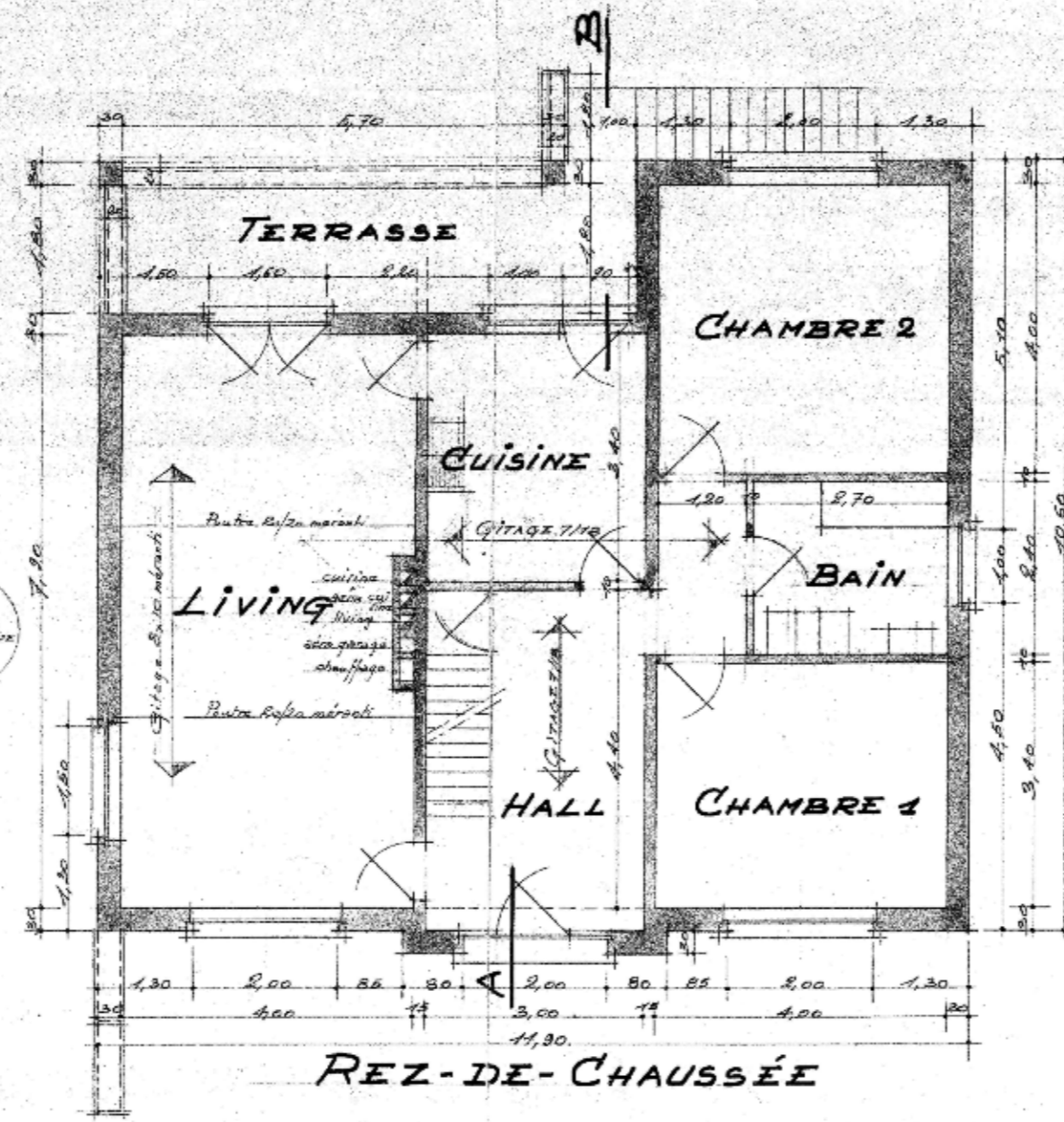
FAÇADE LATÉRALE



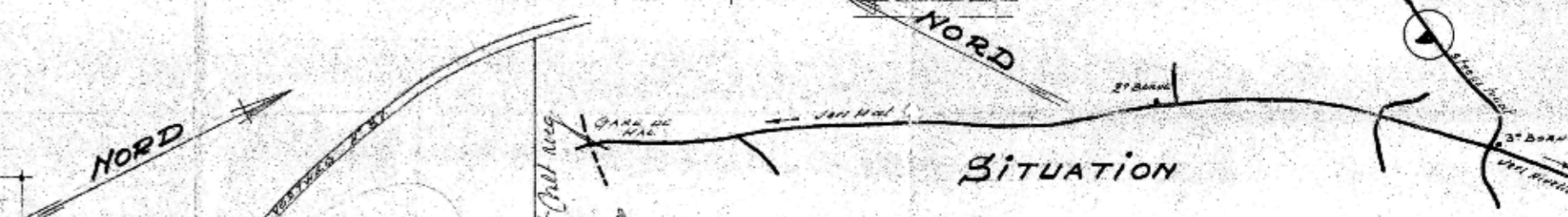
FAÇADE LATÉRALE



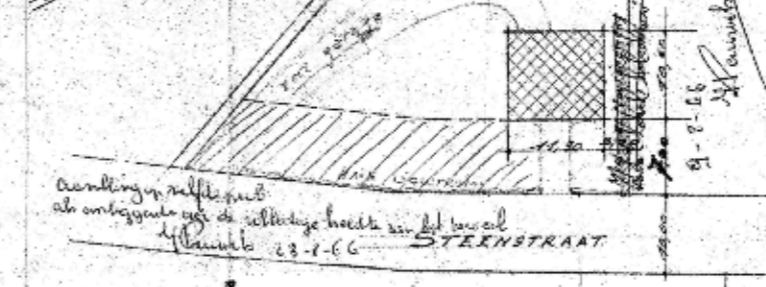
SOUS-SOL



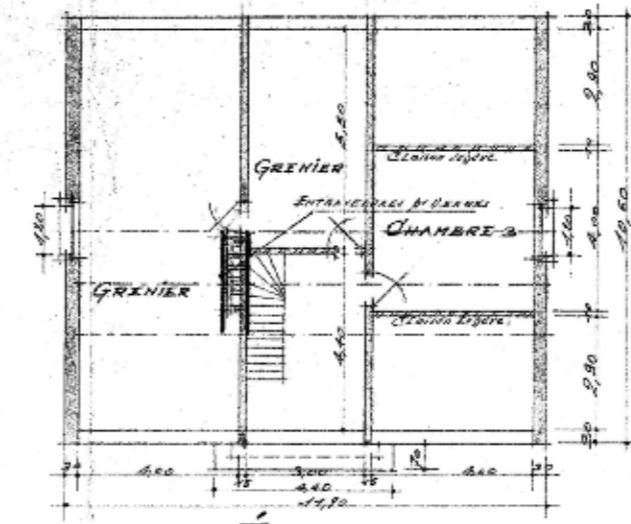
REZ-DE-CHAUSSÉE



SITUATION



IMPLANTATION



ÉTAGE

VILLE DE HAL
 HAMEAU ESSENBEK.
 PROPRIÉTÉ DE MONSIEUR
GOEMAÏRE
 STEENSTRAAT

LES VUES EN PLAN-FACADES
 ET COUPE: Échelle 2=100 ET 4=100
 IMPLANTATION: 1=500
 SITUATION: 1=10.000

DE 13 QUER OFFICIAIR ARCHITECTE.
 STAD HAL
 Architecte: Section K N°171b (partie)

JOINT A MA DEMANDE D'AUTORISATION DU 20 MARS 1966
 LE PROPRIÉTAIRE

BUREAU D'ETUDES
 LORLAUX & LISART
 ARCHITECTES-TOPOGRAPHES
 URSAPHIM - DÉPÔT CIVIL
 90, rue de la Marquise
 1170 SE
 Tel. 087-46419

SURFACE 4,10 x 6,60 = 26,86 m²
 61.66.1 A